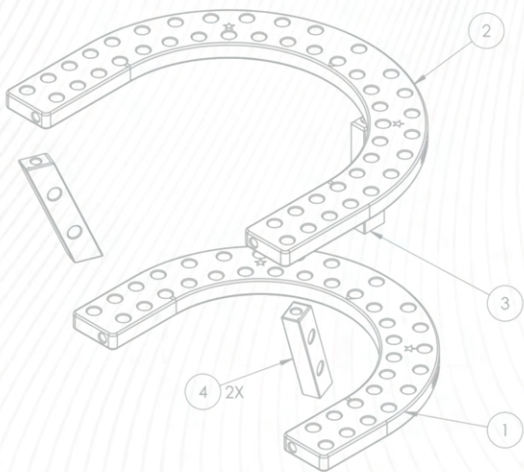


METALOGIX

EXTERNAL FIXATION

including Rev T | Trauma System



a product of

Fusion
ORTHOPEDICS

TABLE OF CONTENTS

1. Plates
 2. Hardware
 3. Implantables
 4. Instruments
 5. Accessories
 6. Trays
 7. Special Request Items
 8. Revolution Trauma
- 
- A faint, light-colored illustration of a surgical tray is visible in the background. The tray is filled with various surgical instruments, including what appears to be a retractor system. In the lower right corner of the tray illustration, there is a magnified view of a specific component, possibly a screw or a part of a retractor, with labels '063' and '3x' next to it.

A large, dark gray, stylized number '1' is centered on the page. It has a thick, blocky appearance with a slight shadow effect.

PLATES

n-Plate



120mm	(Part #115120)
140mm	(Part #115140)
160mm	(Part #115160)
180mm	(Part #115180)
200mm	(Part #115200)
220mm	(Part #115220)

C-Plate



120mm	(Part #116120)
140mm	(Part #116140)
160mm	(Part #116160)
180mm	(Part #116180)
200mm	(Part #116200)

J-Plate



120mm	(Part #119120)
140mm	(Part #119140)
160mm	(Part #119160)
180mm	(Part #119180)
200mm	(Part #119200)



I-Plate

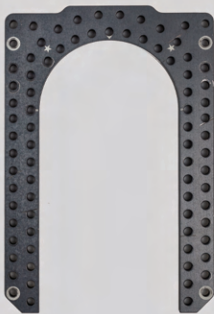
NOT AVAILABLE IN TRAY - MUST REQUEST

I-Plate (Part #100806)

I-Plate Long (Part #100807)

I-Plate XL (Part #100808)

Foot Plate



120mm (Part #114120)

140mm (Part #114140)

160mm (Part #114160)

180mm (Part #114180)

200mm (Part #114200)

(Not in Tray - Must Request)

Cascade Tibial Block

NOT AVAILABLE IN TRAY - MUST REQUEST



120/140mm	(Part #137120)
140/160mm	(Part #137140)
160/180mm	(Part #137160)
180/200mm	(Part #137180)

Stacked Tibial Block

NOT AVAILABLE IN TRAY - MUST REQUEST



120mm	(Part #135120)
140mm	(Part #135140)
160mm	(Part #135160)
180mm	(Part #135180)



HARDWARE

Fore-Foot Bridge



120mm (Part #100120)

140mm (Part #100140)

160mm (Part #100160)

180mm (Part #100180)

200mm (Part #100201)



Posts

METAJOGIX

1-Hole Post

(Part #100801)

2-Hole Post

(Part #100802)

3-Hole Post

(Part #100803)

4-Hole Post

(Part #100804)

5-Hole Post

(Part #100805)

Straight Modular Post

(Part #100600)

Not in trays
Must request

Angled Cascade Modular Post

(Part #100610)

Not in trays
Must request

Super Strut



Short - 98mm/128mm

(Part #105300)

Medium - 128mm/207mm

(Part #105200)

Long - 172mm/350mm

(Part #105400)

Threaded Rod



Included in Tray

40mm (Part #901040)

60mm (Part #901060)

80mm (Part #901080)

120mm (Part #901120)

160mm (Part #901160)

Not Included in Tray Must Request

200mm (Part #901200)

220mm (Part #901220)

240mm (Part #901240)

300mm (Part #901300)

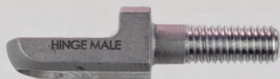
400mm (Part #901400)

Hinges



90° Hinge (Part #100790)

Male Hinge (Part #100720)



Female Hinge (Part #100722)

Plate Extender



30mm (Part #100830)

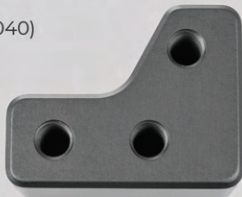
50mm (Part #100850)

T-Block n-Plate

T-Block n-Plate (Part # 900040)

NOT AVAILABLE IN TRAY

MUST REQUEST



T-Block Foot Plate

T-Block Foot Plate (Part # 900041)

NOT AVAILABLE IN TRAY

MUST REQUEST



Bolts



STANDARD BOLT

10mm x 14mm (Part #100065)

10mm x 20mm (Part #100070)

10mm x 30mm (Part #100080)



HALF-PIN BOLT x 4 / 6mm (Part # 100050)

WIRE FIXATION BOLT

Regular (Part # 100048)

SIDE SLOT ONLY

Long (Part # 100049)

BOTH SIDE SLOT & CENTER HOLE



WING BOLT

14mm (Part # 900060)

20mm (Part # 900061)

Nuts



COUNTER NUT (Part #100719)



SPHERICAL NUT x 10mm (Part # 900039)



STANDARD NUT x 10mm (Part #900035)



NUT w/Nylon insert (Part # 900025)



SPEED NUT (Part #900026)



WING NUT (Part # 900030)

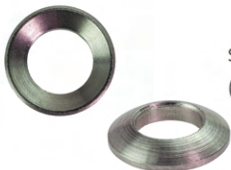
Washers



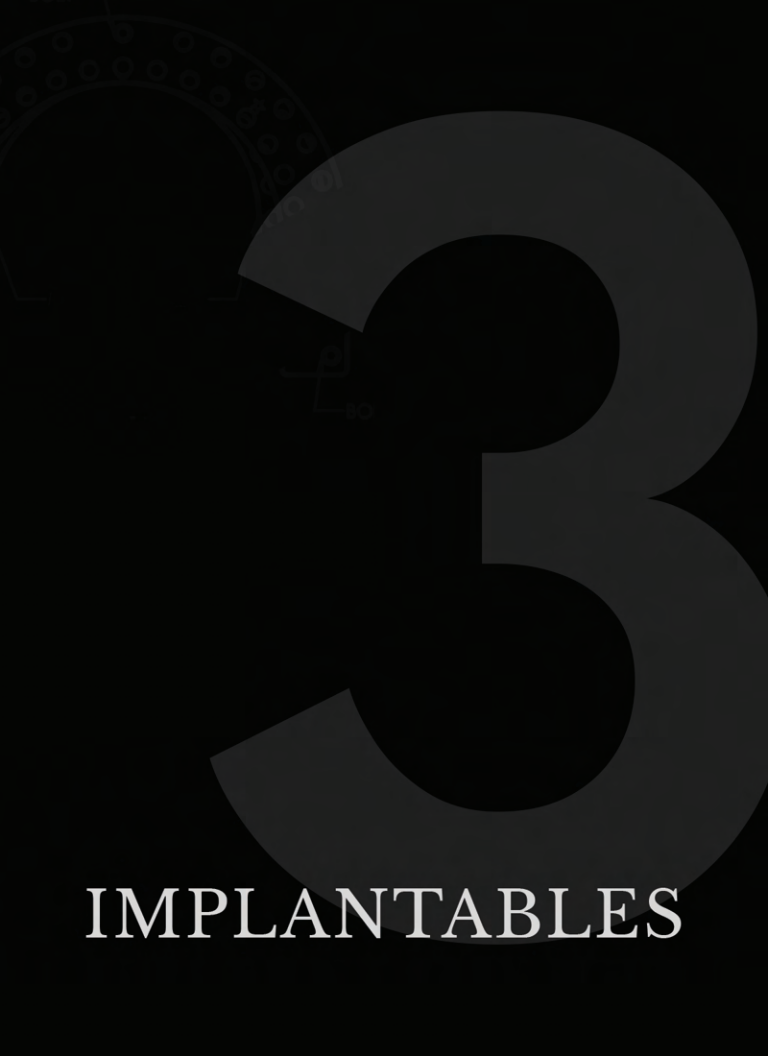
SLOTTED WASHER (Part #900029)



FLAT WASHER x 1mm (Part # 900032)



SPHERICAL WASHER COUPLING
(Part #94007A000)



IMPLANTABLES

Self-Drill Half-Pin



4mm PINS

- 4x20x215mm (Part #617015)
- 4x30x215mm (Part #617030)
- 4x50x215mm (Part #617050)

5mm PINS

- 5x30x215mm (Part #620030)
- 5x40x215mm (Part #620040)
- 5x60x215mm (Part #620060)
- 5x80x215mm (Part #620080)

6mm PINS

- 6x40x215mm (Part #622040)
- 6x50x215mm (Part #622050)
- 6x60x215mm (Part #622060)

Blunt Half-Pin



4mm PINS

- 4x20x215mm (Part #618015)
- 4x30x215mm (Part #618030)
- 4x50x215mm (Part #618050)

5mm PINS

- 5x30x215mm (Part #621030)
- 5x40x215mm (Part #621040)
- 5x60x215mm (Part #621060)
- 5x80x215mm (Part #621080)

6mm PINS

- 6x40x215mm (Part #623040)
- 6x50x215mm (Part #623050)
- 6x60x215mm (Part #623060)

Smooth Wire

Smooth Wire x 2.0mm (Part #900120)

Truss Wire

Truss Wire x 2.0mm (Part #900220)

Steinmann Pin

4mm (Part #624004)

5mm (Part #624005)

6mm (Part #624006)



4

INSTRUMENTS

Drill Bit



2.9mm	(Part #100504)
3.5mm	(Part #100505)
4.5mm	(Part #100506)

Wire Tensioner x Ratcheting



Wire Tensioner x Ratcheting (Part #900100)

Trocar & Sheath



Trocar & Sheath 4-6mm (Part #100404)

Wrenches



Standard Wrench x 10mm (Part #900106)



Open End / Swivel End Wrench (Part #900105)

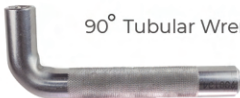


Ratchet Wrench x 10mm (Part #900115)

NOT IN TRAYS - MUST REQUEST



T-Handle Wrench x AO (Part #900103)



90° Tubular Wrench x 10mm (Part #900104)



ACCESSORIES

Plate Sizing Template Set



NOT AVAILABLE IN TRAY - MUST REQUEST

Walker Rail



Walker Rail

(Part #100540)

Pin Caps



4mm

(Part #900110)



5mm

(Part #900111)



6mm

(Part #900112)

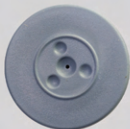
Stoppers

Large Pin Stopper

(Part #900043)

Small Pin Stopper

(Part #900045)



Large Wire Stopper

(Part #900044)

Small Wire Stopper

(Part #900046)



TRAYS



Trays (1-20)

TRAY NAME	PART #	TRAY NUMBERS
IMPLANT TRAY	900123-F	IMP-001 THRU IMP-020
C/FOOTPLATE TRAY	900124-F	CFP-001 THRU CFP-020
J/n PLATE TRAY	900125-F	JNP-001 THRU JNP-020
INSTRUMENT & HARDWARE TRAY	900126-F	IHT-001 THRU IHT-020
GENERAL TRAY	900127-F	GEN-001 THRU GEN-020
IMPLANT MODULAR TRAY	900128-F	IMT-001 THRU IMT-020
NUT & BOLT CADDY TRAY	900129-F	NBT-001 THRU NBT-020

Implant Tray

(IMP-001 thru IMP-020)

PART #	DESCRIPTION	QTY.
900123-F	Implant Tray/IMP-001 thru IMP-020	1
900120	Smooth Wire x 2.0mm	16
900220	Truss Wire x 2.0mm	16
624004	Steinmann Pin x 4mm	2
624005	Steinmann Pin x 5mm	2
624006	Steinmann Pin x 6mm	2
618015	Blunt Half-Pin 4x20x215mm	4
618030	Blunt Half-Pin 4x30x215mm	4
618050	Blunt Half-Pin 4x50x215mm	4
621030	Blunt Half-Pin 5x30x215mm	4
621040	Blunt Half-Pin 5x40x215mm	4
621060	Blunt Half-Pin 5x60x215mm	4
621080	Blunt Half-Pin 5x80x215mm	4
623040	Blunt Half-Pin 6x40x215mm	4
623050	Blunt Half-Pin 6x50x215mm	4
623060	Blunt Half-Pin 6x60x215mm	4
100504	2.9mm Drill	3
100505	3.5mm Drill	3
100506	4.7mm Drill	3
100048	Wire Fixation Bolt	25
100050	Half-Pin Bolt x 4/6mm	10
900026	Speed Nut	20
900060	Wing Bolt x 14mm	12
900061	Wing Bolt x 20mm	12
900030	Wing Nut	16
900043	Large Pin Stopper	6
900044	Large Wire Stopper	6
900045	Small Pin Stopper	20
900046	Small Wire Stopper	20
900035	Standard Nut x 10mm	50
900032	Flat Washer 1mm	20

C & Footplate Tray

(CFP-001 thru CFP-020)

PART #	DESCRIPTION	QTY.
900124-F	C & Foot Plate Tray/CFP-001 thru CFP-020	1
116120	C-Plate x 120mm	2
116140	C-Plate x 140mm	2
116160	C-Plate x 160mm	2
116180	C-Plate x 180mm	2
116200	C-Plate x 200mm	2
114120	Foot Plate x 120mm	2
114140	Foot Plate x 140mm	2
114160	Foot Plate x 160mm	2
114180	Foot Plate x 180mm	2

J & n-Plate Tray

(JNP-001 thru JNP-020)

PART #	DESCRIPTION	QTY.
900125-F	J & n-Plate Tray/JNP-001 thru JNP-020	1
115120	n-Plate x 120mm	2
115140	n-Plate x 140mm	2
115160	n-Plate x 160mm	2
115180	n-Plate x 180mm	2
115200	n-Plate x 200mm	2
115220	n-Plate x 220mm	2
119120	J-Plate x 120mm	2
119140	J-Plate x 140mm	2
119160	J-Plate x 160mm	2
119180	J-Plate x 180mm	2
119200	J-Plate x 200mm	2

Instrument & Hardware Tray

(IHT-001 thru IHT-020)

PART #	DESCRIPTION	QTY.
900126-F	Instrument + Hardware Tray/IHT-001 thru IHT-020	1
901040	Threaded Rod x 40mm	4
901060	Threaded Rod x 60mm	4
901080	Threaded Rod x 80mm	4
901120	Threaded Rod x 120mm	4
901160	Threaded Rod x 160mm	4
100720	Male Hinge	4
100722	Female Hinge	4
100790	90° Hinge	2
100830	Plate Extender 30mm	4
100850	Plate Extender 50mm	4
100801	1-Hole Post	6
100802	2-Hole Post	6
100803	3-Hole Post	6
100804	4-Hole Post	6
100805	5-Hole Post	6
100120	Fore-Foot Bridge 120mm	2
100140	Fore-Foot Bridge 140mm	2
100160	Fore-Foot Bridge 160mm	2
100180	Fore-Foot Bridge 180mm	2
100201	Fore-Foot Bridge 200mm	2
105300	Super Strut - Short	4
105200	Super Strut - Medium	4
105400	Super Strut - Long	4
100404	Trocar & Sheath 4-6mm	2
NA	Wire Tensioner	2
900103	T-Handle Wrench x AO	2
900104	90 Deg Tubular Wrench x 10mm	2
900105	Open End/Swivel End Wrench x 10mm	2
900106	Standard Wrench x 10mm	2

Implant Modular Tray

(IMT-001 thru IMT-020)

PART #	DESCRIPTION	QTY.
900128-F	Implant Modular Tray/IMT-001 thru IMT-020	1
617015	Self-Drill Half-Pin 4x20x215mm	4
617030	Self-Drill Half-Pin 4x30x215mm	4
617050	Self-Drill Half-Pin 4x50x215mm	4
620030	Self-Drill Half-Pin 5x30x215mm	4
620040	Self-Drill Half-Pin 5x40x215mm	4
620060	Self-Drill Half-Pin 5x60x215mm	4
620080	Self Drill Half Pin 5x80x215mm	4
622040	Self-Drill Half-Pin 6x40x215mm	4
622050	Self-Drill Half-Pin 6x50x215mm	4
622060	Self-Drill Half-Pin 6x60x215mm	4
100504	2.9mm Drill	3
100505	3.5mm Drill	3
100506	4.7mm Drill	3

Nut & Bolt Caddy Tray

(NBT-001 thru NBT-020)

PART #	DESCRIPTION	QTY.
900129-F	Nut & Bolt Caddy Tray/NBT-001 thru NBT-020	1
100049	Wire Fixation Bolt-Long	16
100065	Standard Bolt 10mm x 14mm	20
100070	Standard Bolt 10mm x 20mm	20
100080	Standard Bolt 10mm x 30mm	20
94007A000	Spherical Washer Coupling	20
100719	Counter Nut	8
900039	Spherical Nut	40
900110	Pin Caps 4mm	20
900111	Pin Caps 5mm	20
900112	Pin Caps 6mm	20
900025	Nut w/Nylon Insert	10
900029	Slotted Washer	8

Empty Trays

(GEN-001 thru GEN-020)

PART #	DESCRIPTION	QTY.
900127-F	General Tray/GEN-001 thru GEN-020	1

Trays (21-35)

TRAY NAME	PART #	TRAY NUMBERS
IMPLANT TRAY	900123-F	IMP-021 THRU IMP-035
C/FOOTPLATE TRAY	900124-F	CFP-021 THRU CFP-035
J/n PLATE TRAY	900125-F	JNP-021 THRU JNP-035
INSTRUMENT & HARDWARE TRAY	900126-F	IHT-021 THRU IHT-035
GENERAL TRAY	900127-F	GEN-021 THRU GEN-035
SELF-DRILL HALF-PIN CADDY	900128-F	SDHP-A THRU SDHP-T
SECONDARY NUT & BOLT CADDY	900129-F	SNB-A THRU SNB-P
BLUNT HALF-PIN CADDY	900130-F	BHP-A THRU BHP-Y
PRIMARY NUT & BOLT CADDY	900131-F	PNB-A THRU PNB-O

Implant Tray

(IMP-021 thru IMP-035)

PART #	DESCRIPTION	QTY.
900123-F	Implant Tray/IMP-021 thru IMP-035	1
900120	Smooth Wire x 2.0mm	16
900220	Truss Wire x 2.0mm	16
624004	Steinmann Pin x 4mm	2
624005	Steinmann Pin x 5mm	2
624006	Steinmann Pin x 6mm	2
900130-F	Blunt Half-Pin Caddy (Purple) BHP-A thru BHP-Y	1
900131-F	Primary Nut & Bolt Caddy (Purple) PNB-A thru PNB-O	1

C & Footplate Tray

(CFP-021 thru CFP-035)

PART #	DESCRIPTION	QTY.
900124-F	C & Footplate Tray / CFP-021 thru CFP035	1
116120	C-Plate x 120mm	2
116140	C-Plate x 140mm	2
116160	C-Plate x 160mm	2
116180	C-Plate x 180mm	2
116200	C-Plate x 200mm	2
114120	Foot Plate x 120mm	2
114140	Foot Plate x 140mm	2
114160	Foot Plate x 160mm	2
114180	Foot Plate x 180mm	2

J & n-Plate Tray

(JNP-021 thru JNP-035)

PART #	DESCRIPTION	QTY.
900125-F	J & n-Plate Tray/JNP-021 thru JNP-035	1
115120	n-Plate x 120mm	2
115140	n-Plate x 140mm	2
115160	n-Plate x 160mm	2
115180	n-Plate x 180mm	2
115200	n-Plate x 200mm	2
115220	n-Plate x 220mm	2
119120	J-Plate x 120mm	2
119140	J-Plate x 140mm	2
119160	J-Plate x 160mm	2
119180	J-Plate x 180mm	2
119200	J-Plate x 200mm	2

Instrument & Hardware Tray

(IHT-021 thru IHT-035)

PART #	DESCRIPTION	QTY.
900126-F	Instrument + Hardware Tray/IHT-021 thru IHT-035	1
901040	Threaded Rod x 40mm	4
901060	Threaded Rod x 60mm	4
901080	Threaded Rod x 80mm	4
901120	Threaded Rod x 120mm	4
901160	Threaded Rod x 160mm	4
100720	Male Hinge	4
100722	Female Hinge	4
100790	90° Hinge	2
100830	Plate Extender 30mm	4
100850	Plate Extender 50mm	4
100801	1-Hole Post	6
100802	2-Hole Post	6
100803	3-Hole Post	6
100804	4-Hole Post	6
100805	5-Hole Post	6
100120	Fore-Foot Bridge 120mm	2
100140	Fore-Foot Bridge 140mm	2
100160	Fore-Foot Bridge 160mm	2
100180	Fore-Foot Bridge 180mm	2
100201	Fore-Foot Bridge 200mm	2
105300	Super Strut - Short	4
105200	Super Strut - Medium	4
105400	Super Strut - Long	4
100404	Trocar & Sheath 4-6mm	2
NA	Wire Tensioner	2
900103	T-Handle Wrench x AO	2
900104	90 Deg Tubular Wrench x 10mm	2
900105	Open End/Swivel End Wrench x 10mm	2
900106	Standard Wrench x 10mm	2

Empty Trays

(GEN-021 thru GEN-035)

PART #	DESCRIPTION	QTY.
900127-F	General Tray/GEN-021 thru GEN-035	1

Self-Drill Half-Pin Caddy

(SDHP-A thru SDHP-T)

PART #	DESCRIPTION	QTY.
900128-F	Self-Drill Half-Pin Tray/SDHP-A thru SDHP-T	1
617015	Self-Drill Half-Pin 4x20x215mm	4
617030	Self-Drill Half-Pin 4x30x215mm	4
617050	Self-Drill Half-Pin 4x50x215mm	4
620030	Self-Drill Half-Pin 5x30x215mm	4
620040	Self-Drill Half-Pin 5x40x215mm	4
620060	Self-Drill Half-Pin 5x60x215mm	4
620080	Self Drill Half Pin 5x80x215mm	4
622040	Self-Drill Half-Pin 6x40x215mm	4
622050	Self-Drill Half-Pin 6x50x215mm	4
622060	Self-Drill Half-Pin 6x60x215mm	4
100504	2.9mm Drill	3
100505	3.5mm Drill	3
100506	4.5mm Drill	3

Blunt Half-Pin Caddy

(BHP-A thru BHP-Y)

PART #	DESCRIPTION	QTY.
900130-F	Blunt Half-Pin Caddy Tray / BHP-A thru BHP-Y	1
618050	Blunt Half-Pin 4x50x215mm	4
618015	Blunt Half-Pin 4x20x215mm	4
618030	Blunt Half-Pin 4x30x215mm	4
621030	Blunt Half-Pin 5x30x215mm	4
621040	Blunt Half-Pin 5x40x215mm	4
621060	Blunt Half-Pin 5x60x215mm	4
621080	Blunt Half-Pin 5x80x215mm	4
623040	Blunt Half-Pin 6x40x215mm	4
623050	Blunt Half-Pin 6x50x215mm	4
623060	Blunt Half-Pin 6x60x215mm	4
100504	2.9mm Drill	3
100505	3.5mm Drill	3
100506	4.5mm Drill	3

Primary Nut & Bolt Caddy

(PNB-A thru PNB-O)

PART #	DESCRIPTION	QTY.
900131-F	Primary Nut & Bolt Caddy/PNB-A thru PNB-O	1
100048	Wire Fixation Bolt	25
100050	Half-Pin Bolt 4-6mm	10
900026	Speed Nut	20
900060	Wing Bolt x 14mm	12
900061	Wing Bolt x 20mm	12
900030	Wing Nut	16
900043	Large Pin Stopper	6
900044	Large Wire Stopper	6
900045	Small Pin Stopper	20
900046	Small Wire Stopper	20
900035	Standard Nut	50
900032	Flat Washer	20

Secondary Nut & Bolt Caddy

(SNB-A thru SNB-P)

PART #	DESCRIPTION	QTY.
900129-F	Secondary Nut & Bolt Caddy/SNB-A thru SNB-P	1
100049	Wire Fixation Bolt-Long	16
100065	Standard Bolt 10mm x 14mm	20
100070	Standard Bolt 10mm x 20mm	20
100080	Standard Bolt 10mm x 30mm	20
94007A000	Spherical Washer Coupling	20
100719	Counter Nut	8
900039	Spherical Nut	40
900110	Pin Caps 4mm	20
900111	Pin Caps 5mm	20
900112	Pin Caps 6mm	20
900025	Nut w/Nylon Insert	10
900029	Slotted Washer	8



SPECIAL REQUEST

ITEMS NOT IN TRAYS

Special Request Items

PART #	DESCRIPTION
N/A	Pre-Assembled Frame / Customized
100806	I-Plate
100807	I-Plate - Long
100808	I-Plate - XL
114200	Footplate x 200mm
137120	Welded Cascade Tibial Block 120/140mm
137140	Welded Cascade Tibial Block 140/160mm
137160	Welded Cascade Tibial Block 160/180mm
137180	Welded Cascade Tibial Block 180/200mm
135120	Welded Stacked Tibial Block 120mm
135140	Welded Stacked Tibial Block 140mm
135160	Welded Stacked Tibial Block 160mm
135180	Welded Stacked Tibial Block 180mm
100600	Straight Modular Post
100610	Angled Cascade Modular Post
901200	Threaded Rod x 200mm
901220	Threaded Rod x 220mm
901240	Threaded Rod x 240mm
901300	Threaded Rod x 300mm
901400	Threaded Rod x 400mm
900040	T-Block n-Plate
900041	T-Block Footplate
900115	Ratchet Wrench x 10mm
N/A	Plate Sizing Template



REVOLUTION
TRAUMA



Z-Post

(Part #118010)



Multi-Pin Clamp

(Part #200180)



Horn

30° Angled Horn (Part #200144)

Super Strut



Pin-to-Plate Super Strut

Medium (Part #205210)

Long (Part #205310)



Pin-to-Pin Super Strut

Medium (Part #205250)

Long (Part #205350)





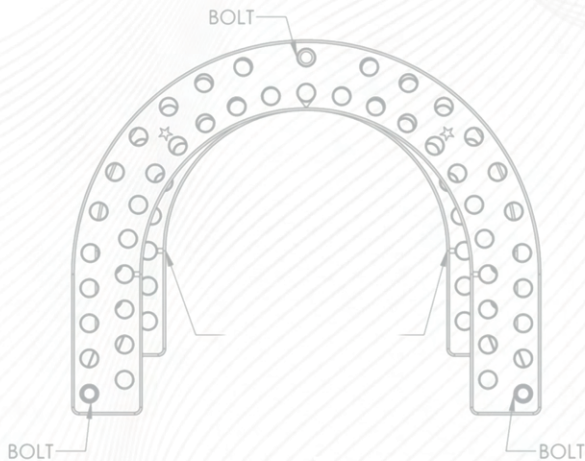
Contact Us

For technical info, questions
or comments:

6859 E. Rembrandt Ave #122
Mesa, AZ 85212

marketing@fusionorthopedics.com

www.metalogixortho.com



METALOGIX

EXTERNAL FIXATION

Fusion Orthopedics LLC. | 6859 E. Rembrandt Ave. #122 | Mesa, AZ 85212
(800) 403-6876 | marketing@fusionorthopedics.com

SLS024P2REV01032025